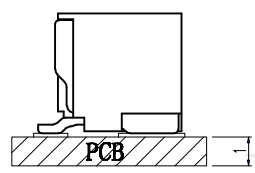
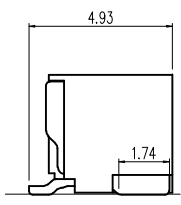
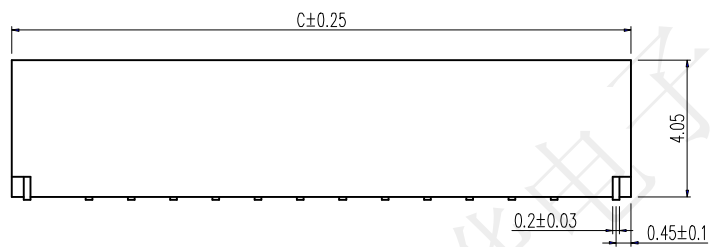
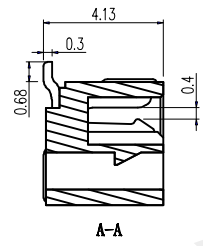
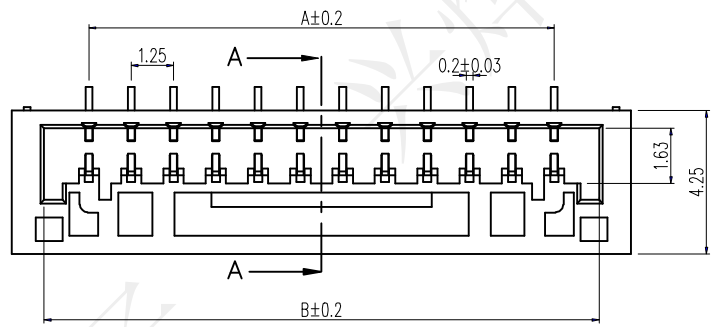


REV.	ECN NO.	DESCRIPTION	DRAW	APPD.	DATE
A	---				

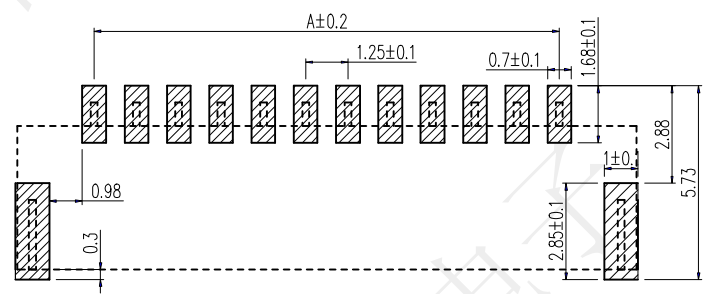
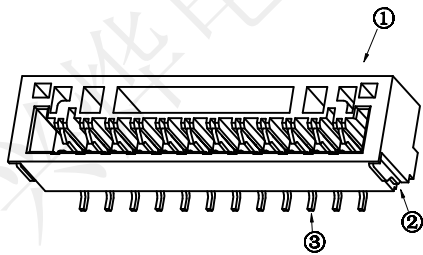
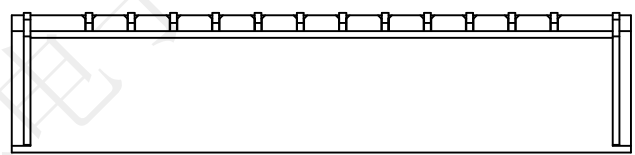


- SPECIFICATIONS**
- 1、Current Rating: 1A AC, DC
  - 2、Voltage Rating: 125V AC, DC
  - 3、Temperatuer Range: -25℃~+85℃
  - 4、Contact Resistance: 20mΩ Max
  - 5、Insulation Resistance: 100MΩ Min
  - 6、Withstanding Voltgag: 500V AC/minute



受控文件

PIN数	编号	尺寸		
		A	B	C
2P	TZH24227	1.25	3.85	5.80
3P	TZH24228	2.50	5.10	7.05
4P	TZH24229	3.75	6.35	8.30
5P	TZH24230	5.00	7.60	9.55
6P	TZH24231	6.25	8.85	10.80
7P	TZH24232	7.50	10.10	12.05
8P	TZH24233	8.75	11.35	13.30
9P	TZH24234	10.00	12.60	14.55
10P	TZH24235	11.25	13.85	15.80
11P	TZH24236	12.50	15.10	17.05
12P	TZH24237	13.75	16.35	18.30
13P	TZH24238	15.00	17.60	19.55
14P	TZH24239	16.25	18.85	20.80
15P	TZH24240	17.50	20.10	22.05
16P	TZH24241	18.75	21.35	23.30
17P	TZH24242	20.00	22.60	24.55
18P	TZH24243	21.25	23.85	25.80
19P	TZH24244	22.50	25.10	27.05
20P	TZH24245	23.75	26.35	28.30



PCB LAYOUT

③	插针	2-20	磷铜	镀锡
②	弹片	2	磷铜	镀锡
①	基座	1	LCP	本色
NO	配件名称	数量	材质	备注

**深圳市兴烨电子有限公司**  
ShenZhen XingYe Electronics co., Ltd

Series Name :  
1.25间距 立贴带扣系列

Product Name :

TOLERANCE		APPD: 陈爱光
X.X ±0.30	X.° ±2°	CHED: 施立敏
.xx ±0.20	.X° ±1°	
.xxx ±0.10	.XX° ±0.5°	DRAW: 马洪飞
UNITS	mm	

Part NO:

	SCALE	SHEET	REV.
1:1	1/1	A1	