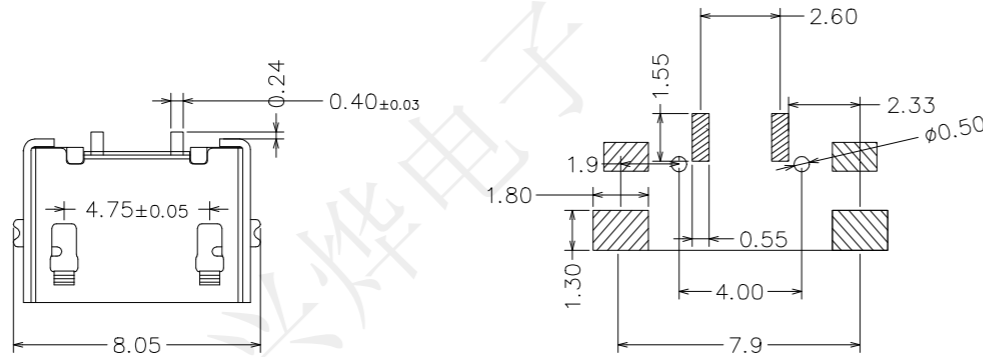
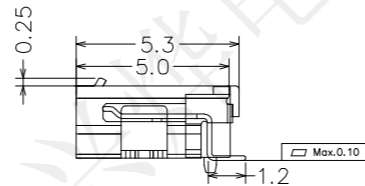
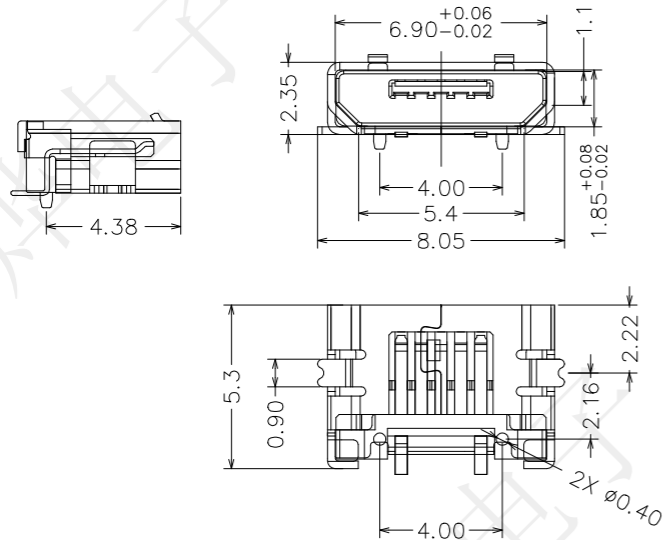


REV.	ECN NO.	DESCRIPTION	DRAW	APPD	DATE
A	---				



RECOMMENDE.P.C.B LAYOUT(TOP VIEW)
EFAULT YOLERANCE:±0.05



受控文件

规格说明: Specifications:

电气特性: Electrical:

- 额定电流: Current Rating
3.0A/contact terminal
- 额定电压: Voltage Rating
30V DC
- 接触阻抗: Contact Resistance
30 milliohms MAX
- 耐电压: Dielectric Withstanding Voltage:
100 V AC AT Sea Level
- 绝缘阻抗: Insulation Resistance:
100MEGA ohms MIN

物理性能: Mechanical:

- 插拔力: Connector Mate and Unmate Force
Mate force: 3.57kgf (MAX)
Unmate force: 1.02kgf (MIN)
- 端子保持力: Terminal Retention
0.5kgf (MIN)

原材料: Material:

- 塑胶 Housing:
High Temperature Plastic,
LCP White/Black
- 端子: Contact: Copper Alloy C2680/c5191
- 外壳: Shell: Copper Alloy C2680/SUS

电镀: Plating:

- 端子: Contact: Plated Gold in Mating Area;
Matte Tin On Solder Tails
- 外壳: Shell:
Plated Matte tin, Salt spray test: 24 hours

深圳市兴烨电子有限公司 ShenZhen XingYe Electronics co., Ltd		Series Name :		
		Product Description : MICRO-2P全贴后焊带柱平口编带		
TOLERANCE		Part NO: MKF26240		
X.X	±0.30	X.°	±2°	APPD: 陈爱光
.XX	±0.20	.X°	±1°	CHED: 施立敏
.XXX	±0.10	.XX°	±0.5°	DRAW: 马洪飞
UNITS	mm	SCALE SHEET REV. 1:1 1/1 A1		