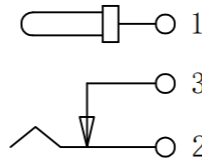
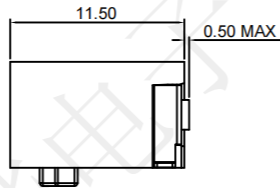
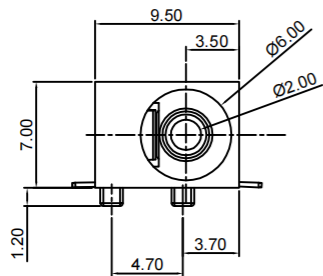


REV.	ECN NO.	DESCRIPTION	DRAW	APPD.	DATE

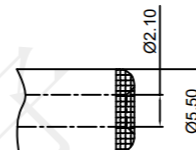
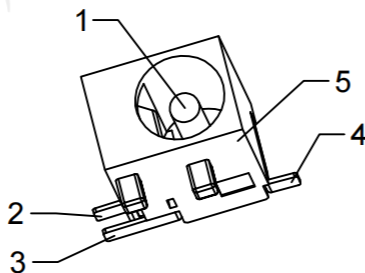
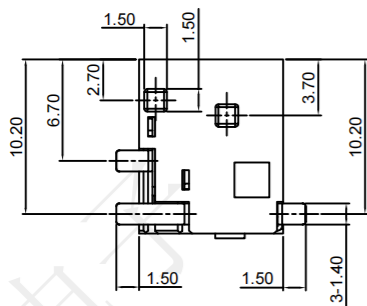


电路示意图

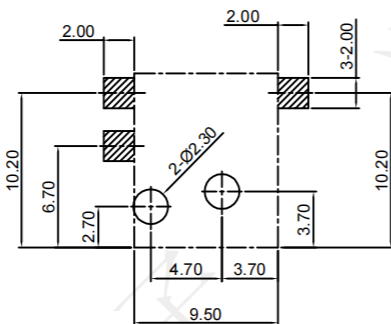


受控文件

SPECIFICATION:
 Operating temperature: -20°C~80°C
 Rated loading: DC 12V 3.5A
 Contact resistance: 30mΩ Max
 Insulation resistance: 100MΩ Min
 Withstanding voltage: AC 500V (50Hz) /min
 Insertion force: 3-30N
 Pullout force: 3-30N
 Life: 5000 CYCLES



推荐插头尺寸

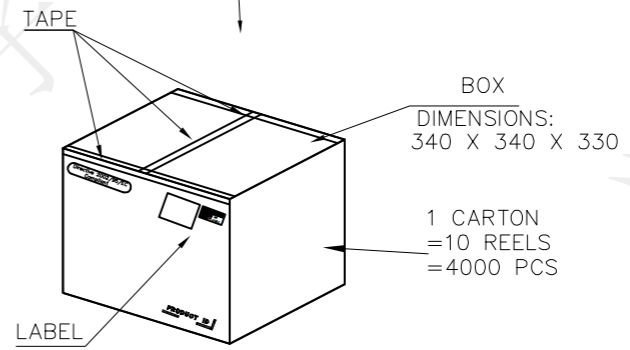
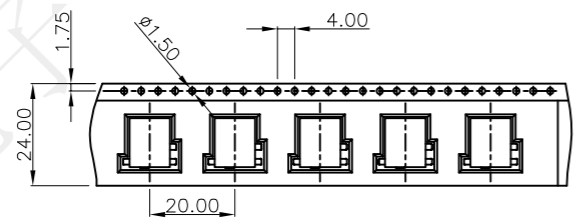
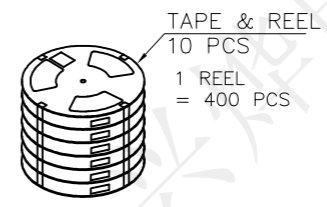
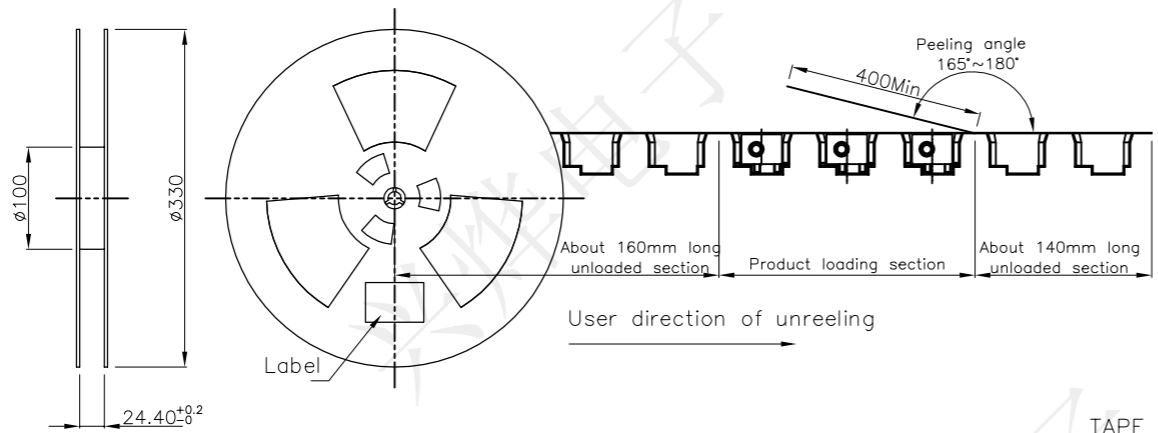


P.C.B 设计参考尺寸

5	主体	PA9T	1	黑色
4	平片	黄铜 T=0.3mm	1	镀银
3	弯片	黄铜 T=0.3mm	1	镀银
2	弹片	磷铜 T=0.3mm	1	镀银
1	PIN针	黄铜	1	镀铜锡
序号	名称	材料	数量	颜色/电镀

		Series Name :	
		Product Name : DC-044T 针2.0全铜短柱编带	
TOLERANCE		Part NO: DCX29043	
X.X ±0.30	X.* ± 2°	APPD: 陈爱光	SCALE SHEET REV. 1:1 1/1 A1
.XX ±0.20	.X* ± 1°	CHEd: 施立敏	
.XXX ±0.10	.XX* ±0.5°	DRAW: 马洪飞	
UNITS	mm		

REV.	ECN NO.	DESCRIPTION	DRAW	APPD.	DATE



NOTE:
 1. PEELING SPEED: 300mm/MINUTE
 2. PEELING RESISTANCE: 20g~130g
 3. PEELING ANGLE: 165°~180°

400	10	4000	--KG	--KG
PCS/盘	盘/箱	PCS/箱	毛重	净重

		Series Name: 包装示意图		
		Product Name: DC-044T 针2.0全铜短柱编带		
TOLERANCE X.X ±0.30 X.* ± 2' .XX ±0.20 .X* ± 1' .XXX ±0.10 .XX* ±0.5' UNITS mm		Part NO: DCX29043		
		APPD: 陈爱光 CHED: 施立敏 DRAW: 马洪飞		
		SCALE: 1:1	SHEET: 1/1	REV.: A1