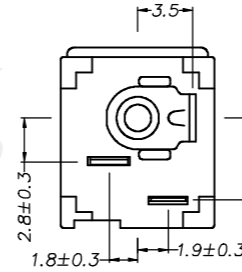
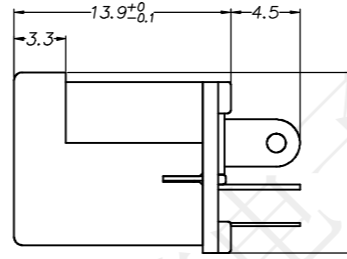
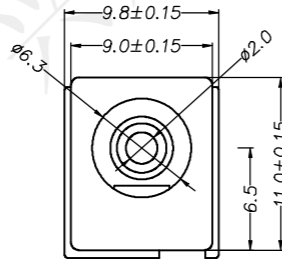
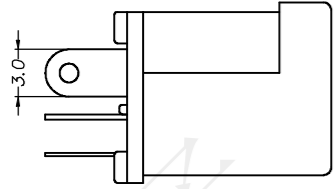
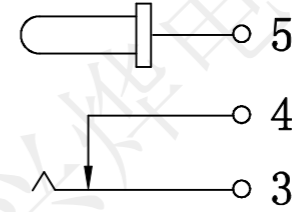
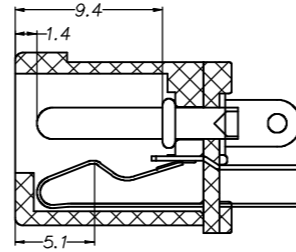
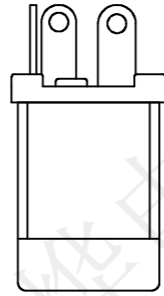
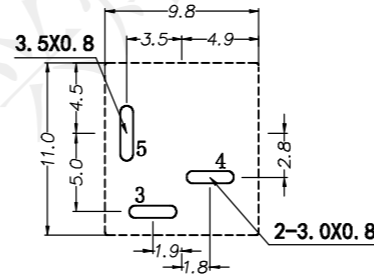
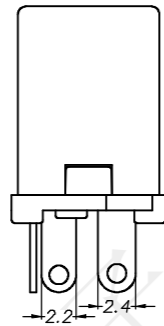


REV.	ECN NO.	DESCRIPTION	DRAW	APPD.	DATE
A	---				



**SPECIFICATION:**  
 Operating temperature: -30°C~70°C  
 Rated loading: DC 30V 0.5A  
 Contact resistance: 30mΩ Max  
 Insulation resistance: 100MΩ Min  
 Withstanding voltage: AC 500V (50Hz) /min  
 Insertion force: 3-30N  
 Pullout force: 3-30N  
 Life: 5000 CYCLES



P. C. B LAYOUT TOP VIEW

**受控文件**

6	圆针	1	黄铜		镀锡
5	平片	1	黄铜	0.40	亮锡
4	弯脚	1	黄铜	0.30	亮锡
3	弹片	1	锰钢	0.20	亮锡
2	后盖	1	PPA(黑色)		
1	底座	1	PPA(黑色)		
序号	产品名称	数量	材料	规格	电镀

**深圳市兴烨电子有限公司**  
 Shenzhen XingYe Electronics co., Ltd

TOLERANCE	
X.X ±0.30	X.* ± 2*
.XX ±0.20	.X* ± 1*
.XXX ±0.10	.XX* ±0.5*
UNITS	mm

APPD: 陈爱光  
 CHED: 施立敏  
 DRAW: 马洪飞

Series Name :		
Product Name : DC-012A-2.0全铜插件		
Part NO: DCL19041		
SCALE	SHEET	REV.
1:1	1/1	A1