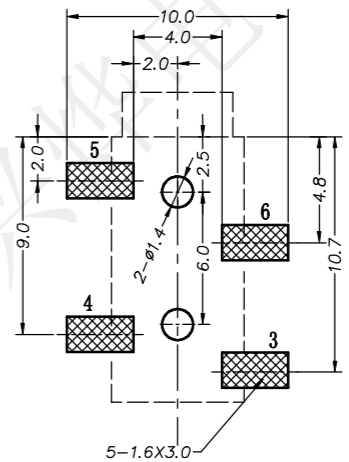
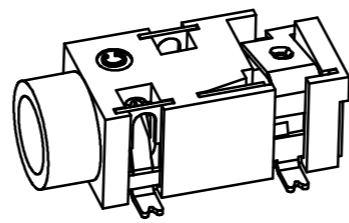
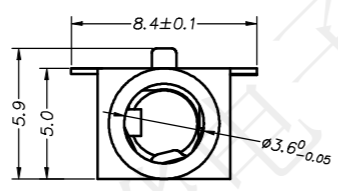
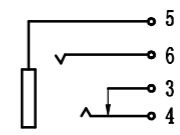


REV.	ECN NO.	DESCRIPTION	DRAW	APPD.	DATE
A	---				

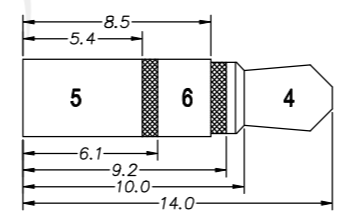
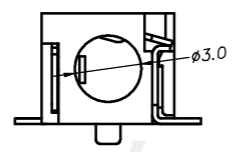
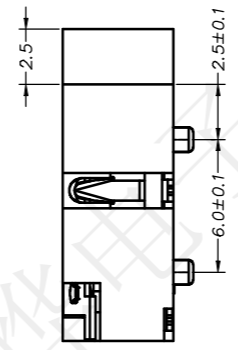
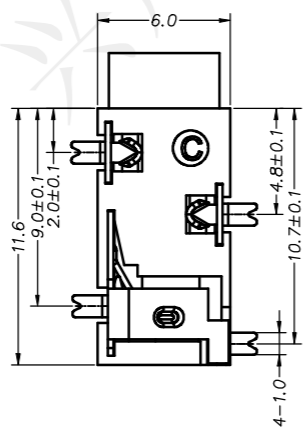


P.C.B LAYOUT TOP VIEW



**SPECIFICATION:**  
 Operating temperature: -30°C~70°C  
 Rated loading: DC 30V 0.5A  
 Contact resistance: 30mΩ Max  
 Insulation resistance: 100MΩ Min  
 Withstanding voltage: AC 500V (50Hz) /min  
 Insertion force: 3-20N  
 Pullout force: 3-20N  
 Life: 5000 CYCLES

受控文件



4	PJ-327C-04	大脚弹片	1	锰钢	0.2T	镀银
3	PJ-327C-03	小脚	1	黄铜	0.25T	镀银
2	PJ-327C-02	中脚	2	磷铜	0.25T	镀银
1	PJ-327C-01	底座	1	PPA		黑色
序号	产品编号	产品名称	数量	材料	规格	处理

**深圳市兴烨电子有限公司**  
 Shenzhen XingYe Electronics co., Ltd

TOLERANCE		
X.X ±0.30	X.° ±2°	APPD: 陈爱光
.XX ±0.20	.X° ±1°	CHED: 施立敏
.XXX ±0.10	.XX° ±0.5°	DRAW: 马洪飞
UNITS	mm	

Series Name :		
Product Name :	PJ-327C镀银	
Part NO:	PJL11004	
SCALE	SHEET	REV.
1:1	1/1	A1