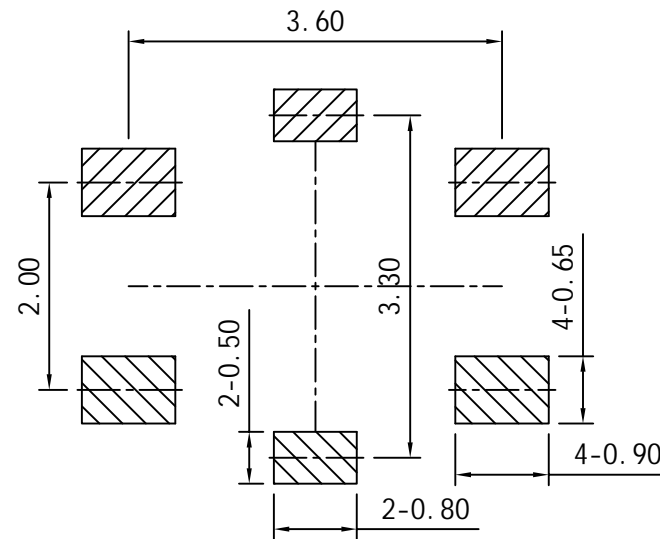
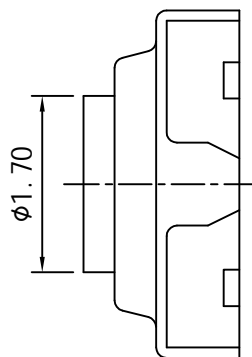
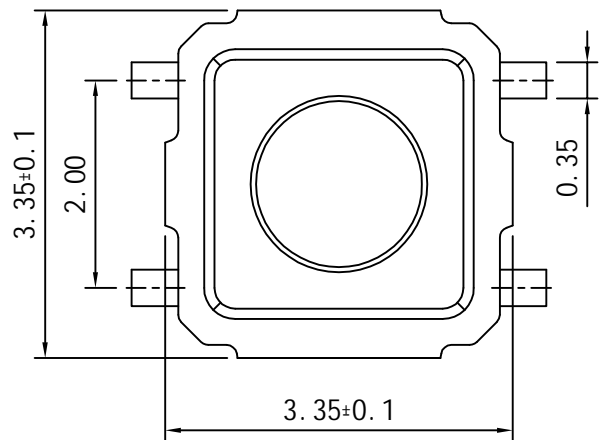
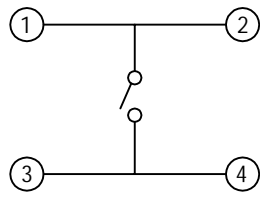
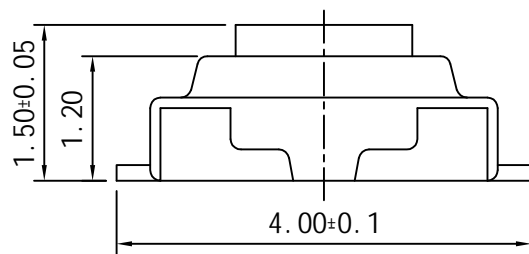


REV.	ECN NO.	DESCRIPTION	DRAW	APPD.	DATE
A	---				

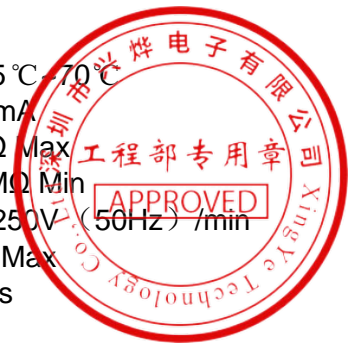


PCB LAYOUT



CIRCUIT DIAGRAM
回路图

SPECIFICATION:
 Operating temperature: -25°C ~ 70°C
 Rated loading: DC 12V 50mA
 Contact resistance: 100mΩ Max
 Insulation resistance: 100MΩ Min
 Withstanding voltage: AC 250V (50Hz) /min
 Operating force: 160±50gf Max
 Electrical Life: 50000 cycles



受控文件

⑤	盖板	1PCS	不锈钢	电镀: 银
④	按钮	1PCS	PA66	黑色
③	簧片	2PCS	不锈钢	银色
②	底座	1PCS	LCP	黑色
①	卡件	1PCS	磷铜	电镀: 银
序列号	名称	数量	材料	备注

		TOLERANCE	
		X.X ±0.30	X.° ±2°
.XX ±0.20	X° ±1°	APPD: 陈爱光	
.XXX ±0.10	.XX° ±0.5°	CHED: 施立敏	
UNITS	mm	DRAW: 马洪飞	

Series Name :			
Product Description :	3*3*1.5双弹片160G全黑编带		
Part No:	TSP22050		
SCALE	SHEET	REV.	
1:1	1/1	A1	